

2025

 Embassy
Summer
POWERED BY EC



Language, Learning & Adventures

USA • CANADA • UK • MALTA • SOUTH AFRICA • UAE

The Embassy Summer Journey

At Embassy Summer we deliver award winning English Language summer camp programmes for young learners, providing a truly life-changing experience for students from all over the world. We are a trusted and globally accredited provider with a 40+ year track record.

Our journey started off with just one summer school in Hastings back in the 1980's and since then we have taken our Embassy Summer camp experience around the world. Nowadays we offer locations in the UK, USA, Canada, Malta, South Africa and the UAE!

Our language programmes are available from 1 week to 8 weeks during the summer and, as well as English language classes, students take part in fun social activities as well as a variety of exciting excursions. An international summer camp is a great way to meet people from all over the world, learn about new cultures, discover new places and build skills such as self-confidence and communication.



Index

The Embassy Summer Journey	2
Why choose Embassy Summer	4
Meet the team behind Embassy Summer	5
Embassy Summer Experience	6
Our Vision and Mission	10
A World of Choice	12
EMBASSY SUMMER IN DUBAI	16
EMBASSY SUMMER IN SOUTH AFRICA	18
Cape Town	18
EMBASSY SUMMER IN MALTA	20
Campus Hub	20
Hotel stay	22
Mediterranean College of Sports	24
Mediterranean College of Sports Homestay	26
EMBASSY SUMMER IN NORTH AMERICA	28
Tufts University - Boston	28
California State University - Los Angeles	30
UCLA - Los Angeles	32
LIU Brooklyn - New York	34
EMBASSY SUMMER IN CANADA	36
York University - Toronto	36
EMBASSY SUMMER IN THE UK	38
Wellington College - Berkshire	48
University of Sussex - Brighton	40
Abbey College - Cambridge	42
University of Kent - Canterbury	44
University of East London - Docklands	46
Queen Mary, University of London - Mile End	48
London Southbank University - Southbank	50
University College London - Stratford	52
Royal Holloway University of London - Egham	54
Oxford Brookes University - Oxford	56
University of Portsmouth - Southsea	58
MAKING MEMORIES WITH EMBASSY SUMMER	60
STUDY TOURS	62
GLOBAL ACHIEVERS ACADEMY	65



Why Choose Embassy Summer?

EXPERIENCE

Highly experienced and dedicated staff across the whole business, from the head office to the centres.

SATISFACTION

We are experienced at delivering outstanding programmes, with an average student satisfaction rate of 99%, based on student feedback.

NATIONALITY MIX

A truly global nationality mix with students coming to our centres from over 61 different countries.

AWARD-WINNING

We have won several awards from recognised bodies such as the Eurasia Awards, ST Star Awards & BETA.

LOCATIONS

Choose from a diverse portfolio of programmes across 24 centres in 6 countries and across 3 continents.



Meet the team behind Embassy Summer

Embassy Summer boasts a core team of dedicated individuals at Head Office level across operations, sales, marketing, admissions and administration, and over 600 temporary staff operating our centres across the summer months.

Our experienced Head Office team is as diverse as the mix of students we welcome, ensuring a melting pot of nationalities which truly supports the overall student experience with Embassy Summer.

THE EMBASSY SUMMER EXPERIENCE

Keeping the Students Safe

We place the highest priority on the welfare and safety of our students and provide a high standard of care and supervision across all of our programmes and in all of our global destinations.

EXPERIENCED HEAD OFFICE TEAM

- Student safety and wellbeing is our first priority.
- All of our staff are required to complete Safeguarding Level 1 provided by the British Council.
- Each centre has at least one dedicated Welfare Officer who's sole responsibility is ensuring our students' wellbeing.

WE CARE 24/7

- We provide supervision after class & activities and during excursions.
- We have dedicated night supervisors in our centres to make sure we provide 24-hour support to our students.
- If any medical issues arise we have access to first aiders on-site and, if required, our staff have established links with local doctors, dentists and hospitals.

NURTURING AND HOMELY ENVIRONMENT

- We provide guardians to ensure that individual students are having a fun and safe experience in our centres.
- All of our residences have staff staying in the accommodation to provide a nurturing and safer environment.

DEDICATED SUPPORT

- Dedicated support provided for our students throughout their stay.
- Full induction and orientation given on arrival.
- All students are issued with identity cards containing our emergency telephone details.



The World Travel & Tourism Council (WTC) SafeTravels stamp enables students to recognise schools around the world which have adopted health and hygiene global standardised protocols – so they can experience 'Safe Travels'.

Learning Inside & Outside the Classroom

IMMERSION IN AN ENGLISH - SPEAKING ENVIRONMENT

- We cater for students of all levels, from beginner to advanced.
- Full immersive experiences provided in an English-speaking environment.

STUDENTS - CENTERED LESSONS

- Students are placed in classes with a good nationality mix wherever possible.
- Students are encouraged to use the language to share opinions and discuss relevant topics.
- Teachers are trained and supported to run student-centred lessons which are fun & engaging.
- Teachers provide continuous valuable feedback to students to help them improve their level of spoken language and to give them added confidence and higher proficiency.

REAL CONVERSATIONS

- All students take an English language level test before starting their classes.
- Typical Embassy Summer lessons start with a speaking activity, allowing students to express their opinions.
- Students might be asked to compare things or recommend something, ask for opinions, summarise a text or solve a problem.
- Teachers might pre-teach some functional phrases or highlight them during a feedback stage; the focus is to provide a platform for real conversation on engaging topics and for the teacher to help them to improve.
- All of our teachers receive training before they start and are supported by our academic team throughout the summer, enabling them to deliver practical lessons with clear learning outcomes that improve students' level of communication.

At Embassy Summer, we see language as a skill; less of a dry academic subject where the teacher explains structures and students complete exercises, and more of an opportunity to improve confidence in communicating and to practise speaking.



OUR LANGUAGE PROGRAMME

Bespoke lesson materials, the Embassy lesson is designed to engage students in discussion, to develop the key life skills of collaboration and intercultural communication, and to provide extensive opportunities to practice and build on current language.

- Lessons taught by teachers trained to deliver the Embassy Lessons.
- 17 students per class and classes suitable for students of all levels.
- 15 hours a week
 - 20 x 45 mins in UK, US and Canada
 - 5 x 60 mins in Malta.
- All learning resources provided are age appropriate.
- All students receive an end of course certificate of attendance.



A Good Night's Sleep

With so much to do during the daytime it is important that all of our students get a good night's sleep. Embassy Summer offers a wide range of residential options, all of which are risk assessed to ensure the ultimate safety for our students.

- Our centres offer residential accommodations on college campuses or in boarding schools. In some locations we also use a few carefully selected hotels.
- We recommend boarding schools for younger students due to their nurturing environment.
- Teenagers have a wider choice, including single rooms with ensuite facilities or hotel accommodations in Malta and Cape Town.
- Students can relax in shared common spaces.
- Host family options are available at some centres, with providers being regularly checked by Embassy Summer staff.
- Experienced Homestay providers, residential guardians for individual students, residential staff, and night managers ensure our students' safety.
- All of our accommodation is cleaned regularly, with linen provided.
- We recommend that students bring their own towels, although some centres provide them. See individual centre pages for more information.
- All centres offer full board accommodations with balanced meals catering to most dietary requirements, ensuring students stay healthy, focused, and energised.

Out & About

- A key part of our summer school experience is exploring local towns, cities, and famous attractions with new friends.
- Two-thirds of the experience is spent outside the classroom, so we tailor our programs to maximise the student adventure.
- Excursions and activities are as important as English classes, all programmes include full-day and half-day excursions, with optional trips for further exploration. Visit our centre pages for specific details.
- When not on excursions, students enjoy a wide range of activities, varying by location, including:
 - sports
 - discos
 - beach barbecues
 - cultural quizzes
 - and many more.
- Our activity programme ensures students meet peers from around the world, practice English and stay healthy, happy and engaged.



Our Vision

HELPING STUDENTS SUCCEED IN A GLOBAL COMMUNITY.



Our Mission

We are inspiring people. As a team, a family, we inspire our students, our partners and each other every day.

We empower, share knowledge and create success. We dream big for ourselves and our students.

From a single school, to a global chain, to a leader in global education, our beliefs have never changed.

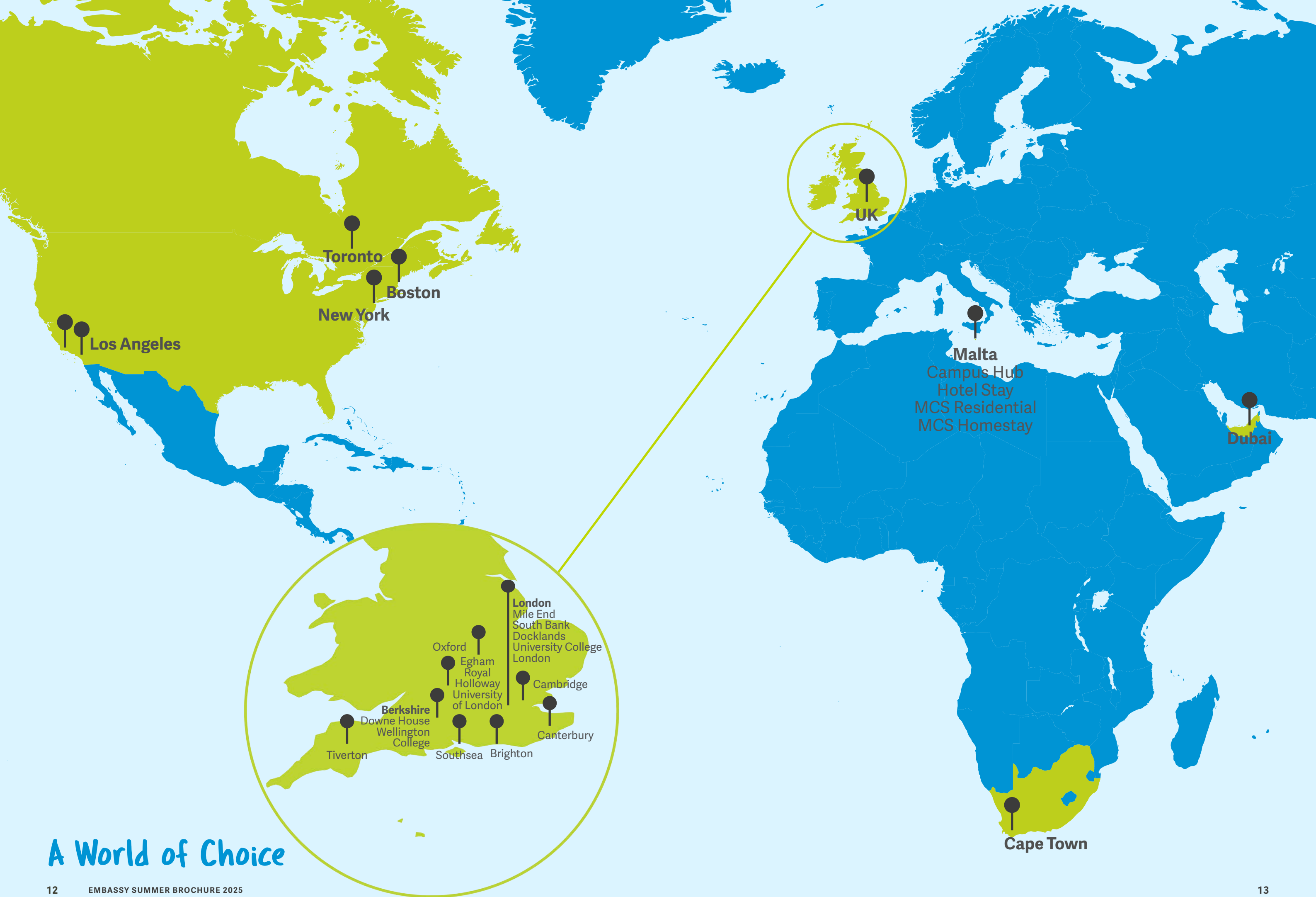
We believe in people and their limitless potential. We celebrate and nurture achievement and embrace every challenge along the way.

With a positive mindset, we innovate and keep moving forward. When we stumble, we pick ourselves up, re-focus and create a new path.

Everyone we meet on this amazing journey helps to shape who we are. These connections will also shape who you are, now and into the future.

This is our mission.





A World of Choice

South Africa & UAE

CENTRE	LOCATION	SIZE	ACCOMMODATION	AGE	DATES
GEMS WELLINGTON ACADEMY	Dubai	Medium	Twin en-suite rooms	12-18*	On request
EC CAPE TOWN	Cape Town	Medium	Hotel twin en-suite rooms	12-18*	29 Jun-03 Aug

Malta

CENTRE	LOCATION	SIZE	ACCOMMODATION	AGE	DATES
CAMPUS HUB	Malta	Large	Single, twin, triple or quad standard rooms	12-17	22 Jun-17 Aug
HOTEL STAY	Malta	Large	Triple or quad en-suite rooms	12-17	29 Jun-27 Jul
MEDITERRANEAN COLLEGE OF SPORTS	Malta	Small	Twin, triple or quad standard rooms	12-17	29 Jun-24 Aug
MCS HOMESTAY	Malta	Large	Homestay triple or quad rooms	13-17	22 Jun-24 Aug

USA

CENTRE	LOCATION	SIZE	ACCOMMODATION	AGE	DATES
TUFTS UNIVERSITY	Boston	Medium	Twin standard rooms	13-18*	29 Jun - 03 Aug
CALIFORNIA STATE UNIVERSITY LOS ANGELES	Los Angeles	Large	Twin en-suite apartments (sleeps up to 8) or twin standard rooms	12-18*	22 Jun - 10 Aug
UCLA	Los Angeles	Medium	Triple standard rooms	12-18*	22 Jun - 03 Aug
LIU BROOKLYN	New York	Large	Single, twin, triple or quad standard and en-suite rooms	13-18*	22 Jun - 03 Aug

Canada

CENTRE	LOCATION	SIZE	ACCOMMODATION	AGE	DATES
YORK UNIVERSITY	Toronto	Medium	Single en-suite or standard rooms	12-18*	06 Jul - 03 Aug

UK

CENTRE	LOCATION	SIZE	ACCOMMODATION	AGE	DATES
WELLINGTON COLLEGE	Berkshire	Medium	Single, twin, triple or quad standard rooms	10-17	01 Jul - 12 Aug
UNIVERSITY OF SUSSEX	Brighton	Large	Single en-suite rooms	13-17 Individuals 12-18* as part of group	01 Jul - 19 Aug
ABBEY COLLEGE	Cambridge	Medium	Single en-suite rooms	12-18*	29 Jun - 10 Aug
UNIVERSITY OF KENT	Canterbury	Medium	Single en-suite or standard rooms	12-18*	24 Jun - 19 Aug
ROYAL HOLLOWAY, UNIVERSITY OF LONDON	Egham	Medium	Single en-suite rooms	10-18*	24 Jun - 19 Aug
UNIVERSITY OF EAST LONDON	London, Docklands	Large	Single en-suite rooms	11-18*	17 Jun - 19 Aug
QUEEN MARY, UNIVERSITY OF LONDON	London, Mile End	Large	Single en-suite rooms	12-18*	24 Jun - 19 Aug
LONDON SOUTH BANK UNIVERSITY	London, South Bank	Large	Single en-suite rooms	13-17 18-21	22 Jun - 17 Aug
UNIVERSITY COLLEGE LONDON (NEW CENTRE)	London, Stratford	Medium	Single en-suite rooms	12-18*	22 Jun - 17 Aug
OXFORD BROOKES UNIVERSITY	Oxford	Medium	Single en-suite or standard rooms	13-17 Individuals 12-18 as part of group	22 Jun - 17 Aug
UNIVERSITY OF PORTSMOUTH	Southsea	Medium	Single en-suite rooms	12-18*	1 Jul - 12 Aug

GEMS Wellington Academy

Dubai, United Arab Emirates

Dubai is one of the safest cities in the world and an international hub, making it a perfect place for an international summer school. Our summer camp in Dubai is located on the modern campus of GEMS Wellington Academy Silicon Oasis, located on the edge of academic city, just a short journey by private bus to our residence in the student village.

DATE

- On Request

AGE

- 12–17 (18 year olds accepted as part of a group with a leader)

CHECK OUT THE FULL CENTRE DETAILS HERE

The Centre



Centre Highlights

ACCOMMODATION

- Single and Twin en suite rooms
- Bathroom Ratio 1:1/ 1:2 students
- Flats of 5-9 with communal kitchen
- Single bed, wardrobe, desk, chair

CLEANING

- Accommodation is cleaned weekly
- Linen cleaning is done weekly
- Laundry available at the residence, small fee

SPORT FACILITIES

- Indoor sports halls
- Swimming pools
- Football pitch
- Tennis courts
- Dance studio
- Outdoor areas

SHOPS AND CAFÉS

- Mini supermarket and cafes are available at the residence and students will have plenty of shopping opportunities during their stay with us in the many world class shopping malls in the UAE.

MEALS

- Full board package

TOWELS

- Students bring their own towels

WIFI

- Wifi is available on campus



Burj Khalifa visit



The Facilities



The Accommodation

A Sample Week

The programme is for illustrative purposes only and is subject to amendments or alterations.

	MORNING	AFTERNOON	EVENING
SUN	Arrivals/on-site activities		Welcome Games
MON	Testing/ Induction	Visit to the Burj Khalifa	Trashion Show
TUE	Lessons	Swimming / Football	The Great Egg Drop
WED	Lessons	Visit to The Dubai Fountain	Evening visit
THUR	Lessons	Sports afternoon	Quiz Night
FRI	Lessons	Visit to Dubai Marina and the Marina Mall	Disco
SAT	Full day trip – Red Dunes Desert Safari		Film Night / Quiz

EC Cape Town



Cape Town, South Africa

Cape Town is one of the world's top tourist destinations, offering a wide variety of natural beauty, cultural highlights and historical significance. As a former British colony, English is the main spoken language of communication. EC Cape Town is located in the business district of the Cape Town city centre and is only a 5-minute walk to the Waterfront district, the most visited tourist attraction in South Africa. Students are housed in a hotel which is a short 7-minute walk to the school.

DATE

- 29 June - 03 August

AGE

- 12–17 (18 year olds accepted as part of a group with a leader)

[CHECK OUT THE FULL CENTRE DETAILS HERE](#)



Centre Highlights

ACCOMMODATION

- Students accommodated at StayEasy Cape Town City Bowl hotel
- Hotel en-suite twin room
- Bathroom Ratio 1:2 students
- Two single beds, desk, chair, wardrobe, bed linens

CLEANING

- Accommodation is cleaned weekly
- Linen cleaning is done weekly
- Launderette is available within walking distance from the hotel at an additional cost

SPORT FACILITIES

- Our programme offers a variety of sporting activities for students whilst with us that are pre-booked locally.

SHOPS AND CAFÉS

- Our school and residence are in the heart of the city with plenty of shops and cafes nearby.

MEALS

- Fullboard package

DISTANCE TO CLASS

- Close walking distance to the school

TOWELS

- Provided

WIFI

- Wifi is available at the Hotel



A Sample Week

The programme is for illustrative purposes only and is subject to amendments or alterations.

	MORNING	AFTERNOON	EVENING
SUN	Arrivals/on-site activities		Welcome Games
MON	V&A Waterfront and Two Oceans Aquarium	Lessons	Bowling
TUE	Half day trip Kirstenbosch Botanical Gardens	Lessons	Karaoke Night
WED	Walking Bo Kaap Tour	Lessons	Ice Skating
THUR	Half day trip Lion's Head Hike	Lessons	Kahoot Quiz Night
FRI	Half day trip Ostrich Farm	Lessons	Party Bus
SAT	Full day trip Hermanus and Whale watching boat tour		Film Night



Campus Hub

Malta

Just a short journey by private bus from our school, St Martin's College, this purpose built student residence offers a variety of room styles, all set above a piazza designed for student life. With a variety of food and shopping outlets, a swimming pool and student common areas to relax in, the Campus Hub is a fantastic option for students looking for a more campus style feel to their summer school experience.

- DATE**
- 22 June - 17 August
- AGE**
- 12-17

CHECK OUT THE FULL CENTRE DETAILS HERE

LOOK AT THE CENTRE GALLERY HERE



The Centre

Centre Highlights

- ACCOMMODATION**
- Twin / Triple rooms
 - Bathroom Ratio 1:5 students
 - Cluster apartments and shared apartments
 - Single bed, wardrobe, bedside table, desk, chair and AC
 - Student lounge, communal kitchen and TV, swimming pool

- CLEANING**
- Accomodation is cleaned weekly
 - Bed linens are provided and changed weekly
 - Laundry is available on site at an additional cost

- SHOPS AND CAFÉS**
- The Campus Hub student village offers a variety of shops and cafes, including a large supermarket.

- MEALS**
- Dinner and breakfast on campus, lunch served at school, packed lunch at weekends

- TOWELS**
- Bath towels are provided and changed weekly, students should bring their own beach towel

- DISTANCE TO CLASS**
- 10-minute private bus journey from the school

- WIFI**
- Wifi is available on campus

- TRAVEL TIMES FROM NEAREST AIRPORT**
- (MLA) Malta International Airport 20 mins by taxi

DAY PROGRAMME OFFERED HERE

OPTIONAL DIVING COURSE



The Facilities



The Accommodation

A Sample Week

The programme is for illustrative purposes only and is subject to amendments or alterations.

	MORNING	AFTERNOON	EVENING
SUN	Golden Bay		Welcome Games
MON	Lessons	Valletta & Malta Experience	UNO Party
TUE	Lessons	Shopping & Swimming	Sports Festival
WED	Lessons	Limestone Heritage & Ghar Lapsi	Beach BBQ
THUR	Lessons	Harbour Cruise	International Party
FRI	Lessons	Comino	Inhouse Games
SAT	Gozo optional trip	Sandy Beach	Mdina treasure hunt



Hotel Stay

Malta

Our hotel options are located in St. Paul's Bay on the outskirts of Qawra and Bugibba which are Malta's largest seaside resort towns. The location is 17 km from the airport and only 15 km from Malta's capital city, Valletta. The coastline promenade is within walking distance from the hotels and boasts some of the islands' best open sea views.

- DATE
- 29 June - 27 July
- AGE
- 12-17

CHECK OUT THE FULL CENTRE DETAILS HERE



ACCOMMODATION

- Triple/Quad en-suite rooms
- Bathroom Ratio 1:4 students
- Single beds, wardrobe, and AC
- Lounge area, games room

CLEANING

- Accomodation is cleaned every other day
- Bed linens are provided and changed every three days
- Laundry is available at an extra cost

SHOPS AND CAFÉS

- There are shops located close to each of our hotels for students to buy snacks and essentials. The programme provides plenty of opportunity for shopping for bigger items!

MEALS

- Dinner and breakfast in the hotel, lunch served at school, packed lunch at weekends

TOWELS

- Bath towels are provided and changed daily, students should bring their own a beach towel

WIFI

- Wifi is available on campus

TRAVEL TIMES FROM NEAREST AIPIORT

- (MLA) Malta International Airport 40 mins by taxi

DAY PROGRAMME OFFERED HERE

OPTIONAL DIVING COURSE



A Sample Week

The programme is for illustrative purposes only and is subject to amendments or alterations.

	MORNING	AFTERNOON	EVENING
SUN	Ghadira Bay		Welcome Games
MON	Water Park	Lessons	UNO Party
TUE	Mosta Rotunda & Mdina	Lessons	Sports Festival
WED	Fond Ghadir	Lessons	Bugibba Walk
THUR	Bowling	Lessons	International Party
FRI	Marsaxlokk & Blue Grotto	Lessons	Beach BBQ
SAT	Gozo optional trip	Sandy Beach	Valletta Night

Mediterranean College of Sports



Malta

The sun-kissed island of Malta is a treasure trove of beautiful beaches, crystal blue seas, and centuries of history, all topped off with that chilled out Mediterranean vibe.

Malta's first all-purpose campus with combined accommodation and academic spaces; purpose-built and designed with the student at its core. MCS is Malta's only live-in campus, with all amenities on-site or within close proximity, with convenience at the forefront of its conception.

DATE

- 29 June - 24 August

AGE

- 12–17

[CHECK OUT THE FULL CENTRE DETAILS HERE](#)



The Centre

Centre Highlights

ACCOMMODATION

- Twin, triple or quad standard rooms
- Bathroom Ratio 1:5 students
- Single beds, desk, chair, wardrobe, air-conditioning

CLEANING

- Bed linens are provided and changed weekly

SPORT FACILITIES

- Outdoor swimming pool
- Athletics track
- Football pitch
- Multi-sport pavilion
- Gymnastics hall

MEALS

- Breakfast, lunch, and dinner served on campus, packed lunch at weekends

TOWELS

- Bath towels are provided and changed weekly, students should bring their own a beach towel

WIFI

- Wifi is available on campus

TRAVEL TIMES FROM NEAREST AIPORT

- (MLA) Malta International Airport 20 mins by taxi

DAY PROGRAMME OFFERED HERE

OPTIONAL DIVING COURSE



The Facilities



The Accommodation

A Sample Week

The programme is for illustrative purposes only and is subject to amendments or alterations.

	MORNING	AFTERNOON	EVENING
SUN	Ghajn Tuffieha		Welcome Games
MON	Lessons	Comino	UNO Party
TUE	Lessons	Esplora	Sports Festival
WED	Lessons	Birgu & Saluting Battery	Beach BBQ
THUR	Lessons	Qawra Beach & Optional Aquarium	International Party
FRI	Lessons	Bowling	Photo Challenge
SAT	Gozo optional trip	Sandy Beach	Mdina Treasure Hunt

Mediterranean College of Sports Home Stay



Malta

The sun-kissed island of Malta is a treasure trove of beautiful beaches, crystal blue seas, and centuries of history, all topped off with that chilled out Mediterranean vibe.

Malta's first all-purpose campus with combined accommodation and academic spaces; purpose-built and designed with the student at its core. MCS is Malta's only live-in campus, with all amenities on-site or within close proximity, with convenience at the forefront of its conception.

DATE

- 22 June - 24 August

AGE

- 13–17

[CHECK OUT THE FULL CENTRE DETAILS HERE](#)



The Centre

Centre Highlights

ACCOMMODATION

- Twin, triple or quad standard rooms
- Bathroom Ratio 1:6 students
- Single bed, bedside table
- There are shared common spaces with the host family

CLEANING

- Bedrooms are cleaned once a week
- Bed linens are provided and changed weekly
- Laundry is done once per week

MEALS

- Dinner and breakfast with family, lunch served at school, packed lunch at weekends

TOWELS

- Bath towels are provided and changed weekly, students should bring their own a beach towel

WIFI

- Wifi is available on campus

TRAVEL TIMES FROM NEAREST AIRPORT

- (MLA) Malta International Airport 20 mins by taxi

DAY PROGRAMME OFFERED HERE

OPTIONAL DIVING COURSE



Host Families



International Party

A Sample Week

The programme is for illustrative purposes only and is subject to amendments or alterations.

	MORNING	AFTERNOON	EVENING
SUN		Ghajn Tuffieha	Welcome Games
MON	Lessons	Comino	UNO Party
TUE	Lessons	Esplora	Sports Festival
WED	Lessons	Birgu & Saluting Battery	Beach BBQ
THUR	Lessons	Qawra Beach & Optional Aquarium	International Party
FRI	Lessons	Bowling	Photo Challenge
SAT	Gozo optional trip	Sandy Beach	Mdina Treasure Hunt

Tufts University



Boston

The Embassy Summer centre in Boston is located on the beautiful campus of the prestigious Tufts University in Medford, Massachusetts, only 20 minutes to the historic city centre, and moments away from Cambridge. The campus has fantastic facilities including a modern sports hall, indoor swimming pool and running track with a recreational field and outdoor space as well as spacious residence halls.

DATE

- 29 June - 03 August

AGE

- 13–18 (18 year olds accepted as part of a group with a leader)

CHECK OUT THE FULL CENTRE DETAILS HERE

LOOK AT THE CENTRE GALLERY HERE



The Centre

Centre Highlights

ACCOMMODATION

- Twin standard rooms
- Bathroom Ratio 1:6 students
- Traditional US college dormitory rooms
- Single bed, wardrobe, desk, chair and AC
- Common room

CLEANING

- Students must clean their own rooms
- bathrooms and common areas are cleaned daily
- Linen cleaning is done weekly
- Laundry is available on residence, small fee

SPORT FACILITIES

- Baseball field
- Basketball and tennis courts
- Indoor swimming pool
- Gym available twice a week
- Outdoor areas for games and activities

SHOPS AND CAFÉS

- There is a shop on campus, as well as small cafe for students' use

MEALS

- Breakfast, lunch and dinner are on campus. Packed lunches are provided for full day trips

DISTANCE TO CLASS

- Classes are a short walk across campus from the hall of residence

TOWELS

- Provided

WIFI

- Wifi is available on campus

TRAVEL TIMES FROM NEAREST AIPORT

- (BOS) Logan International Airport 30 mins

DAY PROGRAMME OFFERED HERE



Sports Activities



Faneuil Hall Square

A Sample Week

The programme is for illustrative purposes only and is subject to amendments or alterations.

	MORNING	AFTERNOON	EVENING
SUN	Arrivals/On-site activities	Boston Shopping or Newport Cliffwalks	Welcome Party Getting to know you Games or sports
MON	Placement & Orientation	Davis Square with Scavenger Hunt, Campus Tour & University Life	Ice Cream Social Jeopardy Game Night
TUE	Lessons	Exploring the Freedom Trail	Tye Dye Tee Shirts or Night at the Gym
WED	Lessons	Visit to Harvard University & Cambridge Commons	Sports or Paint Night
THUR	Lessons	Visit to Faneuil Hall & Quincy Market	Downtown Crossing & Chinatown History with Shopping
FRI	Lessons	Trip to Sports Museum & Explore the North End	Dance Party with Karaoke
SAT		Charles River Walk & Museum of Science	Casino Night

California State University, Los Angeles

Los Angeles

Welcome to sunny California! Our centre is located in the heart of Los Angeles and is central to downtown destinations. The university has new dormitory residences and the campus boasts many facilities such as a gym, basketball and volleyball courts.

DATE

- 22 June - 10 August

AGE

- 12–18 (18 year olds accepted as part of a group with a leader)

CHECK OUT THE FULL CENTRE DETAILS HERE

LOOK AT THE CENTRE GALLERY HERE



The Centre



Centre Highlights

ACCOMMODATION

- Twin en-suite apartments (sleeps up to 8) or twin standard rooms
- Bathroom Ratio 1:4 / 1:6 students
- Traditional US college dormitory rooms
- Single bed, wardrobe, desk, chair, AC
- Common Area

CLEANING

- Students must clean their own rooms
- Common areas are cleaned daily
- Linen changed weekly on request
- Laundry available on campus at a small fee

SPORT FACILITIES

- Basketball court
- Volleyball court
- Soccer field

SHOPS AND CAFÉS

- There is a small shop onsite for students' use

MEALS

- Breakfast, lunch and dinner are on campus. Packed lunches are provided for full day trips
- No Halal options available in this centre.

DISTANCE TO CLASS

- On Campus

TOWELS

- Provided

WIFI

- Wifi is available on campus

TRAVEL TIMES FROM NEAREST AIPORT

- (LAX) Los Angeles International Airport approximately 1 - 1.5 hrs by taxi



Beverly Hills



Santa Monica Pier

A Sample Week

The programme is for illustrative purposes only and is subject to amendments or alterations.

	MORNING	AFTERNOON	EVENING
SUN	Arrivals/ Games / Optional Trips		
MON	Placement & Orientation	Campus Tour / Supply Run	Ice Cream Social and Speed Friending
TUE	Lessons		Sports Night
WED	Hollywood Walk of Fame / Beverly Hills		Casino Night
THUR	Lessons		Movie Night
FRI	Downtown LA - Disney Concert Hall / Olvera Street / Little Tokyo		Karaoke Night
SAT	Santa Monica Pier		Spa Night



UCLA

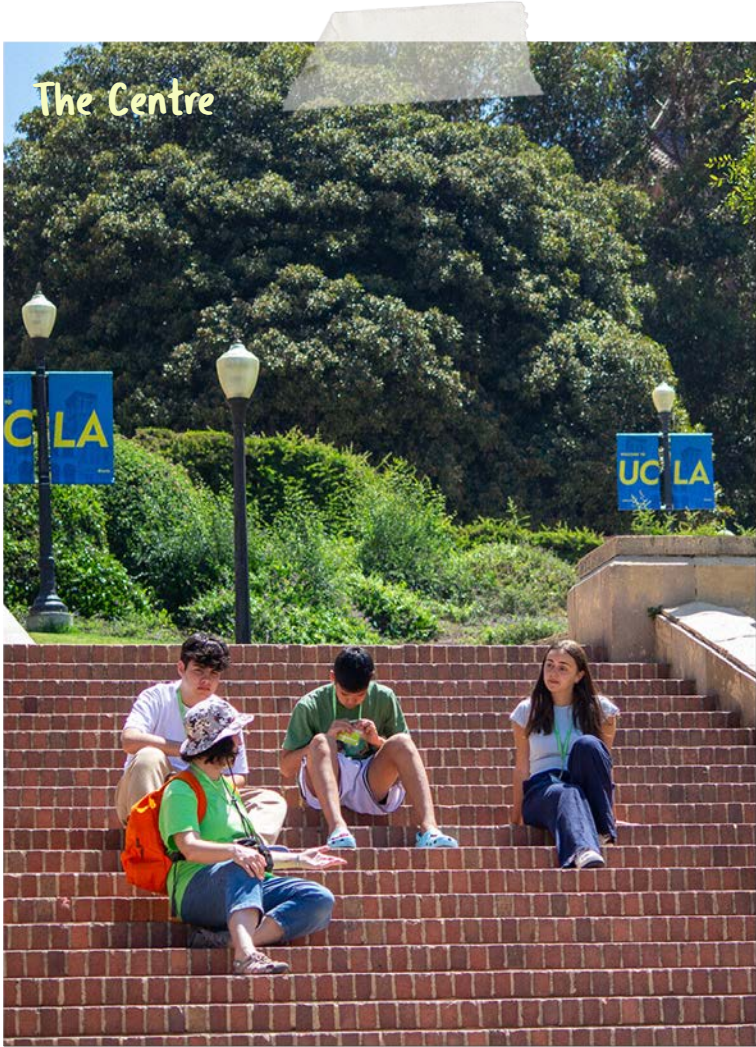
Los Angeles

Founded in 1920, UCLA is now one of the world’s most famous universities. Located inland from Santa Monica, with Beverly Hills, Sunset Boulevard and The Getty Mansion close by, this impressive campus with its outstanding sports facilities is a perfect location for an Embassy Summer summer camp!

- DATE**
- 22 June - 03 August
- AGE**
- 12–18 (18 year olds accepted as part of a group with a leader)

CHECK OUT THE FULL CENTRE DETAILS HERE

LOOK AT THE CENTRE GALLERY HERE



Centre Highlights

ACCOMMODATION

- Triple standard rooms
- Bathroom Ratio 1:8 students
- Traditional US college dorm rooms
- Single or bunk bed, wardrobe, desk, chair
- Common Area

CLEANING

- Students must clean their own rooms
- Bathrooms are cleaned weekly
- Common areas are cleaned daily
- Laundry available on residence, small fee

SPORT FACILITIES

- Tennis courts
- Basketball court
- Outdoor swimming pool
- Playing fields

SHOPS AND CAFÉS

- There are many shops and cafes on campus at UCLA for students to use

MEALS

- Breakfast, lunch and dinner are on campus. Packed lunches are provided for full day trips.
- No Halal options available in this centre.

DISTANCE TO CLASS

- Our classrooms are located within the same building as the students’ accommodation

TOWELS

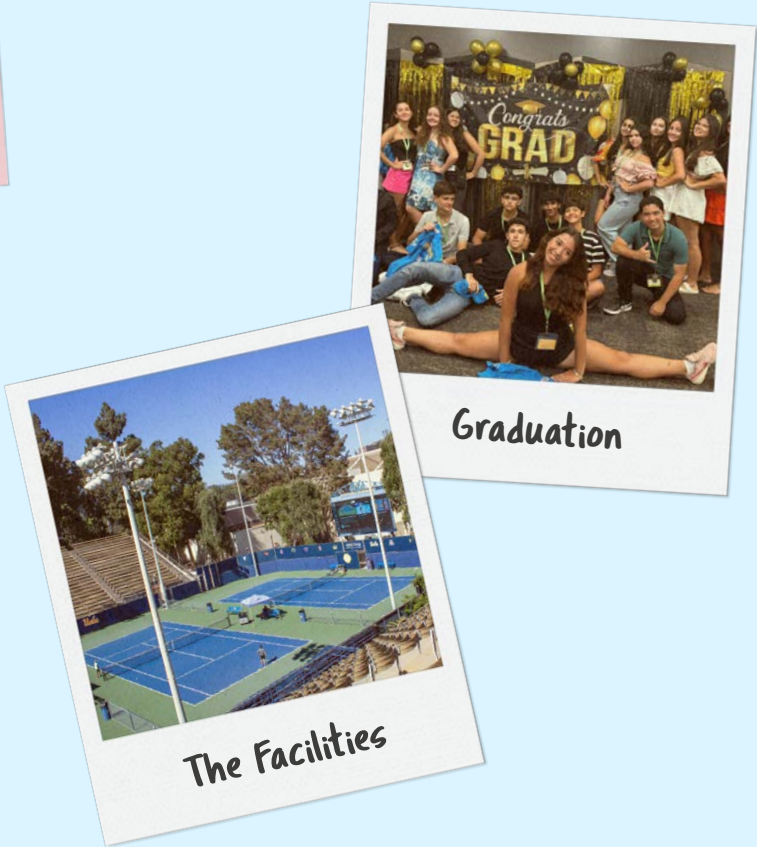
- Provided

WIFI

- Wifi is available on campus

TRAVEL TIMES FROM NEAREST AIRPORT

- (LAX) Los Angeles International Airport approximately 1 - 1.5 hrs by taxi



A Sample Week

The programme is for illustrative purposes only and is subject to amendments or alterations.

	MORNING	AFTERNOON	EVENING
SUN	Arrivals/ Games / Optional Trips		
MON	Placement & Orientation	Campus Tour / Supply Run	Ice Cream Social and Speed Friending
TUE	Lessons		Sports Night
WED	Hollywood Walk of Fame / Beverly Hills		Casino Night
THUR	Lessons		Movie Night
FRI	Downtown LA - Disney Concert Hall / Olvera Street / Little Tokyo		Karaoke Night
SAT	Santa Monica Pier		Spa Night

LIU Brooklyn

New York

Our centre is located in Brooklyn, just one subway stop from downtown Manhattan. The breath-taking iconic skyline of New York can be viewed from Brooklyn Heights and everything that the city's got to offer is within easy reach.

DATE

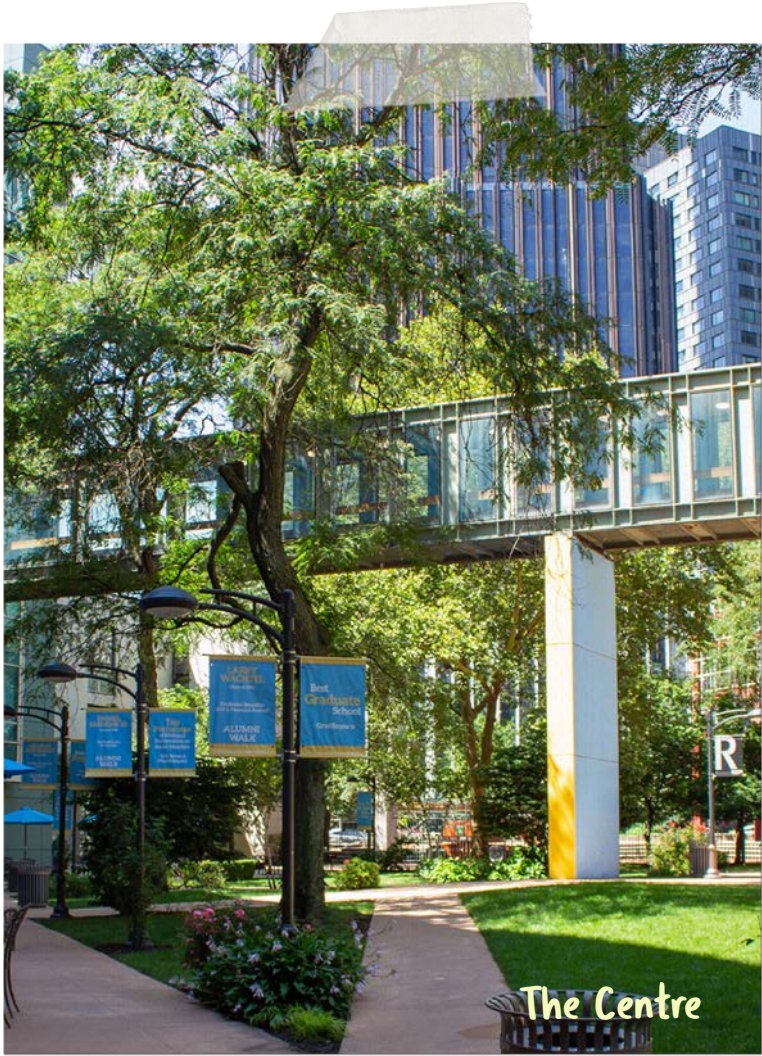
- 22 June - 03 August

AGE

- 13–18 (18 year olds accepted as part of a group with a leader)

CHECK OUT THE FULL CENTRE DETAILS HERE

LOOK AT THE CENTRE GALLERY HERE



Centre Highlights

- ACCOMMODATION**
- Single, twin, triple or quad standard and en-suite rooms
 - Bathroom Ratio 1:8 for standard and 1:4 for en-suite
 - Traditional US college dormitory rooms or adjoining en-suite rooms
 - Single bed, wardrobe, desk, chair, AC
 - Common Area

- CLEANING**
- Students must clean their own rooms
 - Common areas are cleaned daily
 - Linen cleaning is done weekly
 - Laundry available on residence, small fee

- SPORT FACILITIES**
- Nearby park for games and activities

- SHOPS AND CAFÉS**
- There are shops and cafes nearby.

- MEALS**
- Breakfast, lunch and dinner are on campus. Packed lunches are provided for full day trips.

- TOWELS**
- Provided

- WIFI**
- Wifi is available on campus

- TRAVEL TIMES FROM NEAREST AIPORT**
- John F. Kennedy International (JFK) 45 mins
 - La Guardia International (LGA) 45 mins

DAY PROGRAMME OFFERED HERE



A Sample Week

The programme is for illustrative purposes only and is subject to amendments or alterations.

	MORNING	AFTERNOON	EVENING
SUN	Arrivals & Tour of downtown Brooklyn, Shopping or Visit Little Island		Welcome Party or Cable Car to Roosevelt Island
MON	Placement & Orientation	Campus Tour / University Life	Times Sqaure by Night
TUE	Lessons	Famous Macy's 34th Street Shopping	Explore South Street Seaport Shopping
WED	Lessons	Visit Bryant Park & New York City Library	Walk the High Line and Chelsea Market
THUR	Lessons	Walking Tour outside United Nations & Secrets of Grand Central Station	July 4th Celebration
FRI	Lessons	Explore Central Park	Dance Party & Celebrations
SAT	Day Trip to Coney Island		Movie Night or Sports in the Park



York University

Toronto

Our Toronto centre is located at York University about 30 minutes by subway from the city centre. The subway stop is located on campus and a five minute walk from the residence. This central location, on a modern university campus, provides a perfect base for a Canadian summer school experience.

DATE

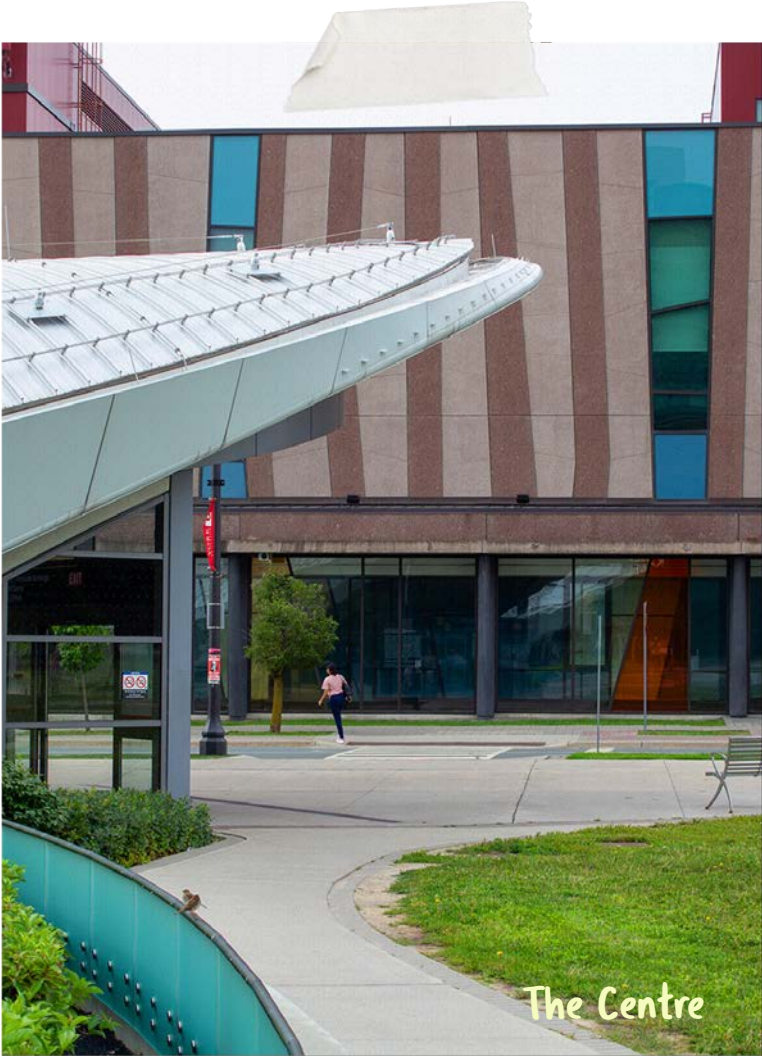
- 06 July - 03 August

AGE

- 12–18 (18 year olds accepted as part of a group with a leader)

CHECK OUT THE FULL CENTRE DETAILS HERE

LOOK AT THE CENTRE GALLERY HERE



The Centre

Centre Highlights

ACCOMMODATION

- Single & twin rooms
- Bathroom Ratio 1:6 students
- Traditional North American college dormitory rooms
- Single bed, wardrobe, desk, chair, AC
- Common Area

CLEANING

- Students must clean their own rooms
- Common areas are cleaned daily
- Linen cleaning is done weekly
- Laundry available on residence, small fee

SPORT FACILITIES

- Outdoor basketball courts.
- Indoor sports halls available

SHOPS AND CAFÉS

- There are several shops and cafes on campus for students' use.

MEALS

- Breakfast, lunch and dinner are on campus. Packed lunches are provided for full day trips.

DISTANCE TO CLASS

- Classes are located a short walk from the student accommodation.

TOWELS

- Provided

WIFI

- Wifi is available on campus

TRAVEL TIMES FROM NEAREST AIPORT

- Toronto Pearson Airport (YYZ) 25 mins

DAY PROGRAMME OFFERED HERE



Out & About



Niagara Falls Trip

A Sample Week

The programme is for illustrative purposes only and is subject to amendments or alterations.

	MORNING	AFTERNOON	EVENING
SUN	Arrivals/ Yorkdale Shopping or Tour York Botanical Gardens		Welcome Party & Social
MON	Placement & Orientation	Explore Little Italy & Baldwin Village	Explore Round House Parl & Scavenger Hunt
TUE	Lessons	Visit Royal Ontario Museum	Activities Sports or Fashion Trashion Design Runway Show
WED	Lessons	Visit York University Library and Art Gallery	Visit to the CN Tower
THUR	Lessons	Distillery District Walking Embassy Summer-Led Tour	Concert in Toronto Music Gardens
FRI	Lessons	Tie-Dye Party	Dance Party
SAT	Explore Toronto Island or Upgrade trip to Niagara Falls with Outlet Shopping		Movie Night

Wellington College

Berkshire

Historic and traditional, a truly British experience. This famous and highly respected boarding school provides a world-leading educational environment, and a wealth of first class facilities, all set within an inspirational campus.

DATE

- 01 July –12 August

AGE

- 10–17

CHECK OUT THE FULL CENTRE DETAILS HERE

LOOK AT THE CENTRE GALLERY HERE

The Centre

Centre Highlights

ACCOMMODATION

- Single / twin / triple / quad standard rooms
- Bathroom ratio 1:5 students
- Students are housed in traditional British boarding houses, separated by gender
- Bathrooms are shared and along the corridors
- Single bed, wardrobe, desk, chair

CLEANING

- Accommodation is cleaned weekly
- Linen cleaning is done weekly
- There are laundry facilities available at the residence.

SPORT FACILITIES

- Indoor swimming pool
- Tennis courts
- Extensive playing fields
- Cricket nets

MEALS

- Breakfast, lunch and dinner are on campus. Packed lunches are provided for full day trips.

DISTANCE TO CLASS

- On Campus

TOWELS

- Students bring their own towels

WIFI

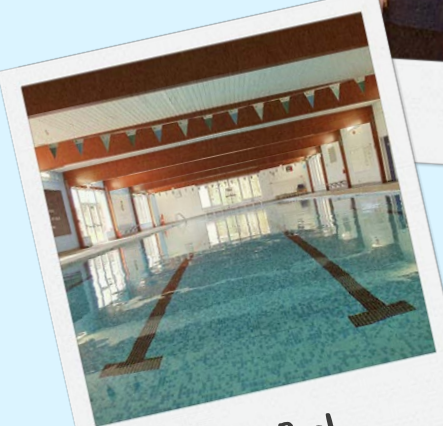
- Wifi is available on campus

TRAVEL TIMES FROM NEAREST AIPORTS

- (LGW) London Gatwick Airport 1 hr 30 mins
- (LHR) London Heathrow Airport 45 mins
- (STN) Stansted Airport 2 hrs
- (LTN) Luton Airport 1 hr 30 mins



Oxford Trip



The Pool

A Sample Week

The programme is for illustrative purposes only and is subject to amendments or alterations.

	MORNING	AFTERNOON	EVENING
TUE	Arrivals / On-site sports and activities Optional trip to Cambridge with walking tour and college visit		Welcome Games On-site Activities
WED	Testing/ Induction	On-site sports and activities Crowthorne village walk	Karaoke Optional Cinema / Bowling
THUR	Lessons	Half-day trip to Reading and Reading Museum	Talent show
FRI	Lessons	Mini-Olympics	Culture Club Egg Drop
SAT	Lessons	Half-day trip to Windsor and Windsor Castle	Treasure Hunt
SUN	Lessons	Arts and Crafts On-site sports and activities	Disco
MON	Full-day trip to London with walking tour and visit to the National Gallery		Film night Local walk

University of Sussex

Brighton

Known as ‘London by the sea’, Brighton is a multi-cultural city full of great beaches, hip cafes and trendy shops. Our centre is located on the campus of the well-known University of Sussex in Falmer, only a short bus or train journey from the city centre.

DATE

- 01 July - 19 August

AGE

- 13–17 Individuals (12-18 year olds accepted as part of a group)

CHECK OUT THE FULL CENTRE DETAILS HERE

LOOK AT THE CENTRE GALLERY HERE



Centre Highlights

ACCOMMODATION

- Single room with en-suite
- Bathroom ratio 1:1 students
- Flats of 5-9 with communal kitchen
- Single bed, wardrobe, desk, chair

CLEANING

- Accommodation is cleaned weekly
- Linen cleaning is done weekly
- Laundry facilities available on campus, small fee

SPORT FACILITIES

- Indoor sports hall
- Outdoor areas

SHOPS AND CAFÉS

- Mini supermarket and cafes are available on campus

MEALS

- Breakfast, lunch and dinner are on campus. Packed lunches are provided for full day trips.

DISTANCE TO CLASS

- On Campus

TOWELS

- Students bring their own towels

WIFI

- Wifi is available on campus

TRAVEL TIMES FROM NEAREST AIRPORTS

- (LGW) London Gatwick Airport 45 mins
- (LHR) London Heathrow Airport 1 hr 30 mins
- (STN) Stansted Airport 2 hrs
- (LTN) Luton Airport 2 hrs 15 mins



Activities



The Accommodation

A Sample Week

The programme is for illustrative purposes only and is subject to amendments or alterations.

	MORNING	AFTERNOON	EVENING
TUE	Arrivals/ Departures On-site Activities Optional trip to Portsmouth Historic Dockyards		Welcome Games On-site Activities
WED	Testing / Induction	Half-day trip: Brighton with walking tour	Karaoke Optional Cinema / Bowling
THUR	Lessons	Half-day trip: Arundel Castle	Photo Scavenger Hunt Brighton Bingo
FRI	Lessons	On-site Sports	Brighton Fashion Show
SAT	Lessons	Half-day trip: Lewes by train	Nature Walk Lip Dub Presentation
SUN	Lessons	Capture the flag or Drama	Disco Kahoot Quiz
MON	Full-day trip: London with Westminster walking tour and National Gallery visit		Film Night

Abbey College



Cambridge

Explore the academic excellence of Cambridge, a timeless haven for aspiring scholars. With its prestigious university settings and serene environment, Cambridge offers a unique opportunity to immerse yourself in a world of learning and discovery.



The Centre

DATE

- 29 June - 10 August

AGE

- 12–18 (18 year olds accepted as part of a group with a leader)

CHECK OUT THE FULL CENTRE DETAILS HERE

LOOK AT THE CENTRE GALLERY HERE

Centre Highlights

ACCOMMODATION

- Single room with en-suite
- Bathroom ratio 1:1 students
- Some of our accommodation is laid out in flats with a small common area. Other rooms are in the main school building with en suite rooms along the corridors and a larger communal common room
- Bed, chest of drawers, wardrobe, desk, lamp

CLEANING

- Accommodation is cleaned weekly
- Linen cleaning is done weekly
- Laundry facilities available on campus, small fee

SPORT FACILITIES

- Abbey College sports hall
- Basketball court

SHOPS AND CAFÉS

- There are several supermarket style shops close to the campus

MEALS

- Breakfast, lunch and dinner are on campus. Packed lunches are provided for full day trips.

DISTANCE TO CLASS

- Students accommodated in our flat style rooms have a short 5 minute walk to the classrooms.

TOWELS

- Students bring their own towels

WIFI

- Wifi is available on campus

TRAVEL TIMES FROM NEAREST AIRPORTS

- (LGW) London Gatwick Airport 2 hrs
- (LHR) London Heathrow Airport 2 hrs
- (STN) Stansted Airport 1 hr
- (LTN) Luton Airport 1 hr 30 mins



Out & About



The Accommodation

A Sample Week

The programme is for illustrative purposes only and is subject to amendments or alterations.

	MORNING	AFTERNOON	EVENING
SUN	Arrivals / Departures On-site Activities Optional Trip to Brighton		Welcome and Team Games
MON	Testing/ Induction	Walking Tour of Cambridge	Karaoke Optional to Cinema
TUE	Lessons	Indoor Sports Arts and Crafts - Cambridge Theme	Kahoot Quiz Night
WED	Lessons	Half-day trip: King's College	Talent show
THUR	Lessons	Mini Olympics	Disco Night
FRI	Lessons	Cambridge Round Church	Big Game Bingo
SAT	Full-day trip: London with Westminster Walking Tour & Covent Garden		Film Night

University of Kent



Canterbury

Discover Canterbury, a historic city in Kent, boasting medieval streets, a renowned Cathedral, and UNESCO World Heritage status. Our centre sits on the University of Kent's large campus, close to the city centre, offering superb sports facilities and expansive outdoor spaces for added activities.

DATE

- 24 June - 19 August

AGE

- 12–18 (18 year olds accepted as part of a group with a leader)

[CHECK OUT THE FULL CENTRE DETAILS HERE](#)

[LOOK AT THE CENTRE GALLERY HERE](#)

The Centre



Centre Highlights

ACCOMMODATION

- Single room with en-suite & standard rooms
- Bathroom ratio 1:1 (en-suite) & 1:5 (standard)
- Flats of 5 rooms
- Single bed, wardrobe, desk, chair

CLEANING

- Accommodation is cleaned weekly
- Linen cleaning is done weekly
- Laundry facilities available on campus at a small fee

SPORT FACILITIES

- Outdoor space
- Indoor sports hall

MEALS

- Breakfast, lunch and dinner are on campus. Packed lunches are provided for full day trips.

DISTANCE TO CLASS

- On campus

TOWELS

- Students bring their own towels

WIFI

- Wifi is available on campus

TRAVEL TIMES FROM NEAREST AIRPORTS

- (LGW) London Gatwick Airport 1 hr 30 mins
- (LHR) London Heathrow Airport 2 hrs
- (STN) Stansted Airport 1 hr 45 mins
- (LTN) Luton Airport 2 hrs 15 mins



Trip to Dover



Out & About

A Sample Week

The programme is for illustrative purposes only and is subject to amendments or alterations.

	MORNING	AFTERNOON	EVENING
TUE	Arrivals / Departures Optional trip to Hastings		Welcome Game On-site Activities
WED	Testing/ Induction	Canterbury City, Canterbury Cathedral or walking tour	Marshmallow Challenge
THUR	Lessons	Half-day trip: Whitstable Town	Photo Scavenger Hunt
FRI	Lessons	On-site Sports	Karaoke
SAT	Lessons	Half-day trip: Chatham Dockyards	Multi Sports
SUN	Lessons	Mini Olympics	Disco
MUN	Full day trip: Cambridge with walking tour or London with Westminster walking tour		Film Night

University of East London



Docklands

Our centre is located at the Docklands Campus of the University of East London, which is located next to the River Thames opposite London City Airport. From the modern residence buildings students will get a great view of London’s iconic skyline and easy access to central London when you want to explore the city.

DATE

- 17 June - 19 August

AGE

- 11–18 (18 year olds accepted as part of a group with a leader)

[CHECK OUT THE FULL CENTRE DETAILS HERE](#)

[LOOK AT THE CENTRE GALLERY HERE](#)

The Centre



Centre Highlights

ACCOMMODATION

- Single room with en-suite & standard rooms
- Bathroom ratio 1:1 students
- Flats of 4-6 rooms with communal kitchen
- Single bed, wardrobe, desk, chair

CLEANING

- Accommodation is cleaned weekly
- Linen cleaning is done weekly
- Laundry facilities available on campus, small fee

SPORT FACILITIES

- Astro turf pitch
- Indoor sports hall
- Outdoor basketball court

MEALS

- Breakfast, lunch and dinner are on campus. Packed lunches are provided for full day trips.

DISTANCE TO CLASS

- On campus

TOWELS

- Students bring their own towels

WIFI

- Wifi is available on campus

TRAVEL TIMES FROM NEAREST AIRPORTS

- (LGW) London Gatwick Airport 1 hr 45 mins
- (LHR) London Heathrow Airport 1 hr 45 mins
- (STN) Stansted Airport 2 hrs
- (LTN) Luton Airport 2 hrs



Out & About



The Accommodation

A Sample Week

The programme is for illustrative purposes only and is subject to amendments or alterations.

	MORNING	AFTERNOON	EVENING
TUE	Arrivals / Departures Sports / Local Activities Optional trip to Hampton Court Palace		Welcome Games On-site Activities
WED	Testing/ Induction	Westminster or London Walking Tour	Disco Optional cable car experience
THUR	Lessons	London British Museum Optional London Eye	The Great Egg Drop! Optional Musical
FRI	Lessons	St Paul's Cathedral	Karaoke Optional Cinema / Bowling
SAT	Lessons	Covent Garden Shopping	Dodgeball Tournament
SUN	Lessons	Greenwich and Maritime Museum	Trashion Show
MON	Cambridge with walking tour or Canterbury with walking tour		Film Night

Queen Mary, University of London

Mile End, London

Our centre is located on the modern city campus of Queen Mary University of London, just a short journey on the tube from central London in zone 2. Students stay in the halls of residence in the student village, which has both shops and a sports hall which they use during their programme.

DATE

- 24 June - 19 August

AGE

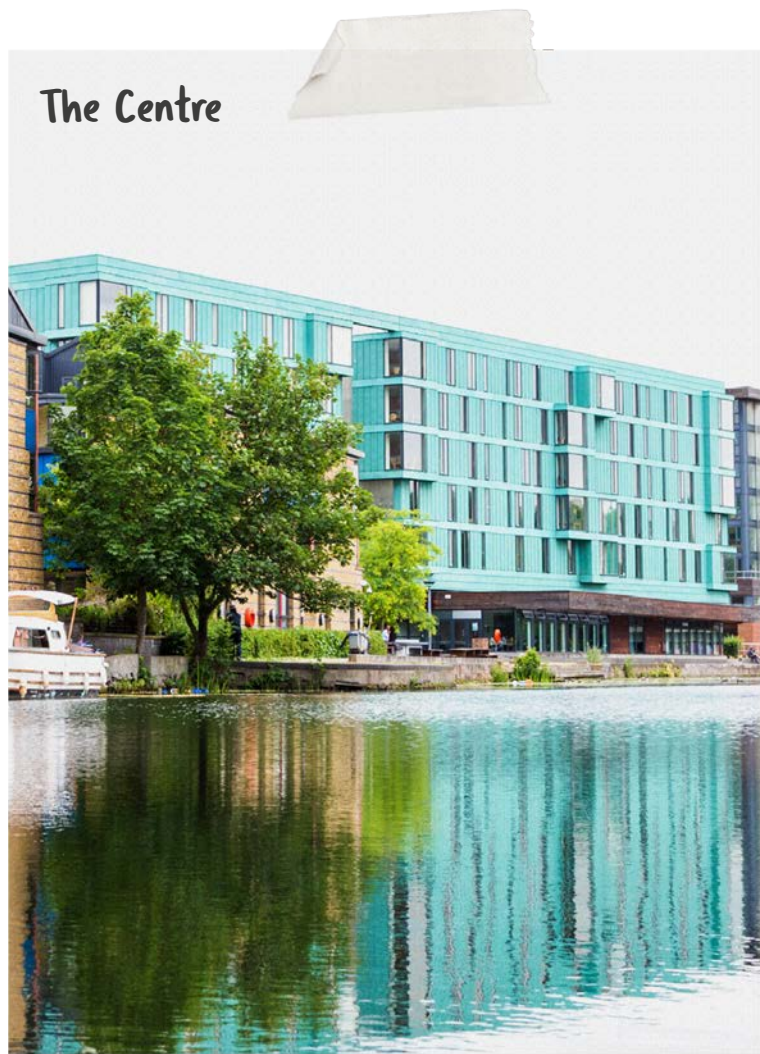
- 12–18 (18 year olds accepted as part of a group with a leader)

CHECK OUT THE FULL CENTRE DETAILS HERE

LOOK AT THE CENTRE GALLERY HERE



The Centre



Centre Highlights

ACCOMMODATION

- Single room with en-suite
- Bathroom ratio 1:1 students
- Flats of 5-9 with communal kitchen
- Single bed, wardrobe, desk, chair

CLEANING

- Accommodation is cleaned weekly
- Linen cleaning is done weekly
- Laundry facilities available on residence, small fee

SPORT FACILITIES

- Outdoor space
- Basketball court
- Indoor sports hall

MEALS

- Breakfast, lunch and dinner are on campus. Packed lunches are provided for full day trips.

DISTANCE TO CLASS

- On campus

TOWELS

- Students bring their own towels

WIFI

- Wifi is available on campus

TRAVEL TIMES FROM NEAREST AIRPORTS

- (LGW) London Gatwick Airport 1 hr 30 mins
- (LHR) London Heathrow Airport 1 hr 45 mins
- (STN) Stansted Airport 1 hr 15 mins
- (LTN) Luton Airport 1 hr 45 mins



Tower Bridge



Dining Hall

A Sample Week

The programme is for illustrative purposes only and is subject to amendments or alterations.

	MORNING	AFTERNOON	EVENING
TUE	Arrivals/Departures Local Activities Optional trip to Thorpe Park		Welcome Games Local Walk Indoor Sports
WED	Testing/ Induction	Westminster or other London Walking Tour	Indoor Sports or Treasure Hunt Egg drop
THUR	Lessons	Optional trip to Madame Tussauds, Tower of London, London Eye	Karaoke Optional Musical
FRI	Lessons	Visit to St. Paul's Cathedral	Indoor Sports Optional Cinema / Bowling
SAT	Lessons	London British Museum Optional London Dungeons	Disco
SUN	Lessons	Tate Modern	Trashion Show
MUN	Full-day trip: Brighton with walking tour and visit the Sea Life Centre or Cambridge with walking tour and college visit		Film Night Quiz

London Southbank University

Southbank, London

Our centre is located on the campus of London South Bank University (LSBU), only a short walk from attractions such as the London Eye and the London Dungeon. The location could not be more central! Students stay at McLaren House just a couple of minutes from the main university building.

DATE

- 22 June - 17 August

AGE

- 13–17 Individuals | 18-21 Adults

CHECK OUT THE FULL CENTRE DETAILS HERE

LOOK AT THE CENTRE GALLERY HERE



Centre Highlights

ACCOMMODATION

- Single room with en-suite
- Bathroom ratio 1:1 students
- Arranged in flats of 5, 8 & 10 with communal kitchen
- Single bed, wardrobe, desk, chair

CLEANING

- Accommodation is cleaned weekly
- Linen cleaning is done weekly
- Laundry facilities available on campus, small fee

SPORT FACILITIES

- Indoor sports hall (when available)
- Local parks for outdoor sports

SHOPS AND CAFÉS

- Café available in the teaching area. There are several shops (including a supermarket) within 5 minutes walking distance of the campus.

MEALS

- Breakfast, lunch and dinner are on campus. Packed lunches are provided for full day trips.

DISTANCE TO CLASS

- 5 minute walk

TOWELS

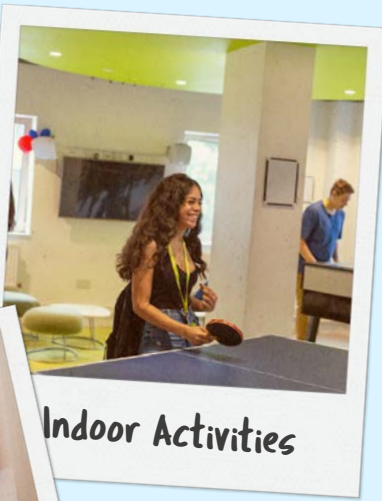
- Students bring their own towels

WIFI

- Wifi is available on campus

TRAVEL TIMES FROM NEAREST AIRPORTS

- (LGW) London Gatwick Airport 2 hrs
- (LHR) London Heathrow Airport 1 hr 45 mins
- (STN) Stansted Airport 1 hr 30 mins
- (LTN) Luton Airport 1 hr 45 mins



Indoor Activities



The Accommodation

A Sample Week

The programme is for illustrative purposes only and is subject to amendments or alterations.

	MORNING	AFTERNOON	EVENING
SUN	Arrivals / Departures Sports / Local Activities or trip to Windsor and Windsor Castle		Sports in Park Welcome and Team Games
MON	Testing/ Induction	Westminster or other London walking tour	Disco
TUE	Lessons	National Portrait Gallery	Quiz Optional Cinema / Bowling
WED	Lessons	Local Activities Optional London Dungeons	Karaoke Optional Musical
THUR	Lessons	Tower Bridge Experience	Shopping at Westfield or Oxford street Film Night
FRI	Lessons	Museum of London or MadameTussauds or London Eye, Tower of London	Disco
SAT	Cambridge with walking tour or Canterbury with walking tour and visit to the cathedral		London-by-Night Walk Talent Show

University College London

Stratford, London

Our new centre in London for 2025 is based on the new Stratford campus of UCL, one of the world's top 10 universities. Located on the 2012 London Olympic Park this beautiful campus boasts fantastic views over the London Stadium (now home to West Ham United), the Olympic Swimming Pool and Canary Wharf. The centre is a 10 minute walk from Westfields Shopping centre and 20 minutes by tube in to central London.

DATE

- 22 June - 17 August

AGE

- 12–18 (18 year olds accepted as part of a group with a leader)



Centre Highlights

ACCOMMODATION

- Single room with en-suite
- Bathroom ratio 1:1 students
- Arranged in flats of 9 with communal kitchen and lounge area
- Single bed, wardrobe, desk, chair

CLEANING

- Accommodation is cleaned twice weekly
- Bed linen is changed weekly
- Laundry facilities available on campus, small fee

SPORT FACILITIES

- Indoor sports hall
- Access to an Olympic swimming pool
- Access to outdoor space for onsite activities

SHOPS AND CAFÉS

- There is a small cafe on site. Westfields shopping centre is a 10 minute walk away.

MEALS

- Breakfast, lunch and dinner are taken in the modern student dining hall on site. On full day trips students are provided with a packed lunch

DISTANCE TO CLASS

- 2 minute walk

TOWELS

- Students should bring their own towels

WIFI

- Wifi is available on campus

TRAVEL TIMES FROM NEAREST AIRPORTS

- (LGW) London Gatwick Airport 2 hrs
- (LHR) London Heathrow Airport 2 hrs
- (STN) Stansted Airport 1 hr 45 mins
- (LTN) Luton Airport 1 hr 45 mins
- Kings Cross St Pancras 1 hr



Out & About



The Facilities

A Sample Week

The programme is for illustrative purposes only and is subject to amendments or alterations.

	MORNING	AFTERNOON	EVENING
SUN	Arrivals/ Departures Local Activities Optional trip to Thorpe Park		Welcome Games Local Walk
MON	Testing/ Induction	Westminster or other London walking tour	Karaoke
TUE	Lessons	London British Museum Optional London Eye	Treasure hunt or Egg drop Optional Musical
WED	Lessons	Tate Modern	Disco
THUR	Lessons	Visit to St. Paul's Cathedral	Shopping Westfield Optional cable car experience
FRI	Lessons	Local Walk or MadameTussauds, Tower of London, London Dungeon	Trashion Show Optional Cinema / Bowling
SAT	Full-day trip: Brighton with walking tour and visit to Sea life Centre or Cambridge with walking tour and college visit		Film Night Quiz

Royal Holloway University of London



Egham

The gorgeous campus of Royal Holloway University of London with its fabulous Harry Potter style 'Founders' Building is a truly wonderful location for a summer school. The large and modern campus has its own supermarket, cafes, sports centre and lots of space to explore and relax!



The Centre

DATE

- 24 June - 19 August

AGE

- 10*-18 (18 year olds accepted as part of a group with a leader)

[CHECK OUT THE FULL CENTRE DETAILS HERE](#)

[LOOK AT THE CENTRE GALLERY HERE](#)

Centre Highlights

ACCOMMODATION

- Single en-suite rooms
- Bathroom ratio 1:1 students
- Students are accommodated in flats with a shared common space
- Single bed, wardrobe, desk, chair

CLEANING

- Rooms cleaned weekly
- Common rooms and bathrooms daily
- Linen cleaning is done weekly
- Laundry facilities available on campus, small fee

SPORT FACILITIES

- Outdoor sports field
- Tennis courts
- Indoor sports hall
- Outdoor basketball courts

SHOPS AND CAFÉS

- On-site supermarket
- Starbucks located on campus

MEALS

- Breakfast, lunch and dinner are on campus. Packed lunches are provided for full day trips.

DISTANCE TO CLASS

- On campus

TOWELS

- Students bring their own towels

WIFI

- Wifi is available on campus

TRAVEL TIMES FROM NEAREST AIRPORTS

- (LGW) London Gatwick Airport 1 hr 45 mins
- (LHR) London Heathrow Airport 45 mins
- (STN) Stansted Airport 2 hr 15 mins
- (LTN) Luton Airport 1 hr 45 mins
- (LCY) London City 1 hr 45 mins
- Kings Cross St Pancras 1 hr 45 mins



Out & About



The Facilities

A Sample Week

The programme is for illustrative purposes only and is subject to amendments or alterations.

	MORNING	AFTERNOON	EVENING
TUE	Arrivals/Departures		Welcome Games On-site Activities
WED	Testing/ Induction	Walk to Egham Town On-site Sports	Photo Scavenger Hunt / Team Games
THUR		Lessons	Welcome Disco
FRI	Full-day trip: London with Westminster walking tour and visit to the National Gallery		Culture Club Arts and Crafts Optional Cinema
SAT	Lessons	Half-day trip: Reading and Shopping	Egg Drop / Make your own movie
SUN	Lessons	Mini Olympics	Themed Disco
MON	Full-day trip: Oxford with Walking Tour and College Visit		Film Night Board Games

Oxford Brookes University



Oxford

Our centre is located on the Headington campus in Oxford Brookes University, within walking distance from the city centre and with plenty of outdoor space. Known for its universities, museums and architecture, Oxford promises a superior language learning environment, with great on-site campus facilities such as a sports hall, modern dining hall and several shops.

- DATE**
- 22 June - 17 August
- AGE**
- 12-18* (*18 year olds accepted as part of group with leader. Individuals 13-17)

CHECK OUT THE FULL CENTRE DETAILS HERE

LOOK AT THE CENTRE GALLERY HERE



The Centre

Centre Highlights

ACCOMMODATION

- Single room with en-suite and standard rooms
- Bathroom ratio 1:1 / 1:5 students
- Flats of 5 rooms with a common area
- Single bed, wardrobe, desk, chair

CLEANING

- Accommodation is cleaned weekly
- Linen cleaning is done weekly
- Laundry facilities available in residence at a small fee

SPORT FACILITIES

- Indoor sports hall
- Communal green areas
- Playing fields
- Tennis and basketball courts

SHOPS AND CAFÉS

- On-site supermarket
- Variety of cafés

MEALS

- Breakfast, lunch and dinner are on campus. Packed lunches are provided for full day trips.

DISTANCE TO CLASS

- Our residences are both approximately a 15 minute walk from the learning area

TOWELS

- Students bring their own towels

WIFI

- Wifi is available on campus

TRAVEL TIMES FROM NEAREST AIRPORTS

- (LGW) London Gatwick Airport 2 hrs 15 mins
- (LHR) London Heathrow Airport 1 hr 45 mins
- (STN) Stansted Airport 2 hrs 30 mins
- (LTN) Luton Airport 1 hr 45 mins



Out & About



The Facilities

A Sample Week

The programme is for illustrative purposes only and is subject to amendments or alterations.

	MORNING	AFTERNOON	EVENING
SUN	Arrivals/ Departures On-site Activities		Kahoot Quiz
MON	Testing/ Induction	Oxford Walking tour Sports Optional trip to Bicester Village	Welcome Disco
TUE	Lessons	Indoor Sports Arts and Crafts	Trashion Show
WED	Lessons	Half-day trip: Oxford Museum or College	Culture Club Team Games Optional to Cinema
THUR	Lessons	Half-day trip: Bourton on the Water & Model Village	Indoor Sports Arts and Crafts
FRI	Lessons	Indoor Sports Fantasy Literature Walking Tour	Film Night Photo Scavenger Hunt
SAT	Full-day trip: Windsor and Windsor Castle		Film Night

University of Portsmouth



Southsea

BACK FOR 2025!!! After several years at Rees Hall we are delighted to be home again on the Langstone Campus in Southsea. This is a small, contained campus approximately 15-20 minutes from central Portsmouth and its many attractions including the Spinnaker Tower, HMS Victory and Gunwharf Quays with all its shops and restaurants!

DATE

- 01 July - 12 August

AGE

- 12–18 (18 year olds accepted as part of a group with a leader)

[CHECK OUT THE FULL CENTRE DETAILS HERE](#)

[LOOK AT THE CENTRE GALLERY HERE](#)

The Location



Centre Highlights

ACCOMMODATION (NEWLY RENOVATED)

- Single room with en-suite / standard rooms
- Bathroom ratio 1:1 (en-suite) & 1:4 (standard)
- Rooms are laid out in flats with newly renovated kitchen and common spaces
- Single bed, wardrobe, desk, chair

CLEANING

- Accommodation is cleaned weekly
- Linen cleaning is done weekly
- Laundry facilities available on campus at a small fee

SPORT FACILITIES

- Large playing field overlooking the sea
- Optional access to tennis courts if required

MEALS

- Breakfast, lunch and dinner are served in the on-site dining hall. Packed lunches are provided for full day trips.

DISTANCE TO CLASS

- On campus

TOWELS

- Students bring their own towels

WIFI

- Wifi is available on campus

TRAVEL TIMES FROM NEAREST AIRPORTS

- (LGW) London Gatwick Airport 1 hr 35 mins
- (LHR) London Heathrow Airport 1 hr 45 mins
- (STN) Stansted Airport 2 hrs 45 mins
- (LTN) Luton Airport 2 hrs 15 mins
- Kings Cross St Pancras: 2 hrs 30 mins



Out & About



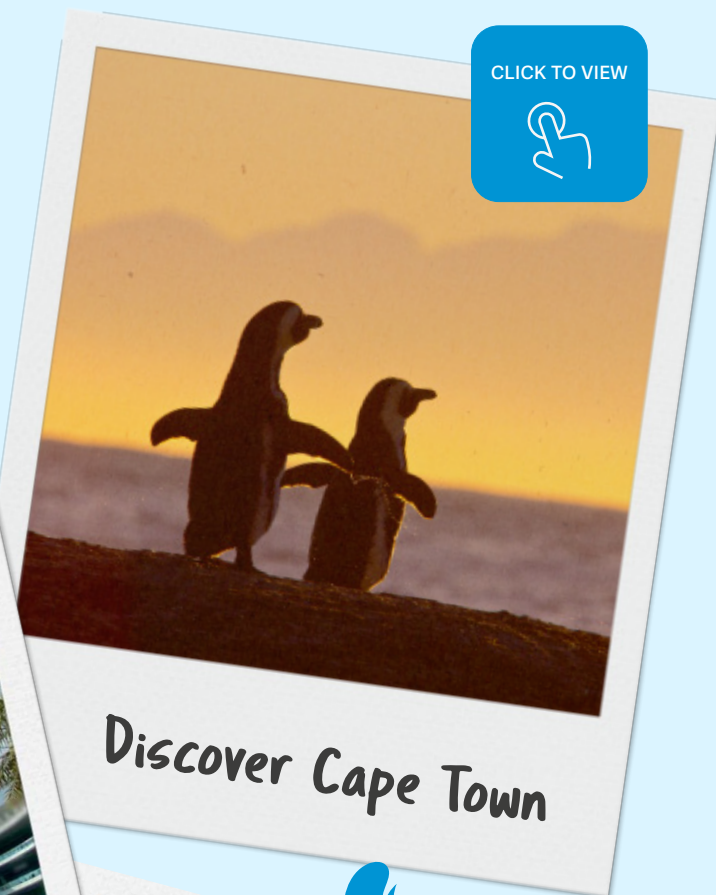
Arundel Castle

A Sample Week

The programme is for illustrative purposes only and is subject to amendments or alterations.

	MORNING	AFTERNOON	EVENING
TUE	Arrivals / Departures On-site Activities: Sports, Crafts & Games Optional trip to Isle of White		Welcome Team Games
WED	Testing/ Induction	The D-Day walking tour	Karaoke Football
THUR	Lessons	Multi-sports	Murder mystery Culture club Optional to Cinema
FRI	Lessons	Milton Common & Swan Lake Optional visit to Portsmouth	Egg Drop Arts & crafts
SAT	Lessons	Half day trip: Arundel Castle	Talent show Kwik Cricket
SUN	Lessons	Mini Olympics Drama	Disco Dodgeball
MON	London with Westminster walking tour and visit to a museum		Film Games Night

Making Memories with Embassy Summer



Embassy StudyTours provide personalised, bespoke English programmes for junior groups. This can be anything from additional trips and excursions outside of the classroom to specialised classes. StudyTours groups from around the world can create their perfect study trip – learning English whilst having an adventure!

WHAT WE OFFER

We have many, many years' experience delivering English programmes for international groups meaning that in each of our destinations, you will find a special programme designed to make the most of the unique features of that location.

ENGLISH COURSES

Classrooms are modern, comfortable and equipped with the latest learning technology. Our teachers plan interesting lessons and there is free Wi-Fi in every centre. Customised courses are available on request.

ACCOMMODATION

A variety of options are available to meet the needs and budget of your group. They are conveniently located so that you can travel easily to school and enjoy after-school activities.

ACTIVITY PROGRAMME

A range of activities and excursions are available in each location to match the budget and interests of the group. StudyTours can easily accommodate your needs.

EXCELLENT SERVICE

Expect a full service for Study Tour groups. Sales Managers work with you to create a customised programme and our Enrolment and Centre teams provide the logistic support to ensure a happy and successful group experience.



Low Season Programmes

GROUP COURSES IN ENGLAND, IRELAND, MALTA AND DUBAI

Where Can You Study?

MALTA

- **Campus Hub:** Get ready to discover everything this little island with a big personality has to offer! Students stay at Campus Hub, a modern student residence located just 15 minutes by our private bus from the school. These newly built premises are designed and styled perfectly for students and feature a list of amenities that will help students' study-life balance.
- **Homestay:** When choosing to stay with a Maltese family, students have the unique opportunity to share and experience the day-to-day life of a local family together with all the diversity of the Maltese culture.
- **Mediterranean College of Sport:** Malta's first all-purpose campus with combined accommodation and academic spaces; purpose-built and designed with the student at its core. MCS is Malta's only live-in campus, with all amenities on-site or within close proximity, with convenience at the forefront of its conception.
- **Hotel Options:** The Bella Vista and Canifor Hotels are located in St. Paul's Bay on the outskirts of Qawra and Bugibba which are Malta's largest seaside resort towns. The coastline promenade is within walking distance from the hotels and boasts some of the Islands' best open sea views.

UNITED KINGDOM

- **Bristol:** Study English in Bristol with Embassy StudyTours, staying with a local host family for an immersive experience. Enjoy a welcoming environment, explore Bristol's historic sites, and engage in cultural activities. Enhance your language skills while making lasting memories in this vibrant city.
- **Brighton:** Enjoy an immersive English language experience in Brighton with Embassy StudyTours and stay with a local host family. Enjoy a safe, supportive environment, explore Brighton's attractions, and participate in beach activities and cultural events. Enhance your English skills while making unforgettable memories in this vibrant seaside city.
- **Chessington World of Adventures Resort:** A fun learning experience in the unique rural location, Chessington Park & Resort, only 35 minutes away from central London. Its ideal location makes it the perfect setting for a study trip while offering the opportunity to explore central London with ease.

IRELAND

- **Dublin:** Learn English in Dublin, Ireland's vibrant capital with rich history and culture. Practice your language skills with native speakers and enjoy EC Dublin's state-of-the-art facilities, located close to the city centre. With its dynamic environment and numerous opportunities for learning and exploration, Dublin is the perfect place for a fun and exciting language experience.

DUBAI

- **GEMS Wellington Academy:** Study English in Dubai with Embassy StudyTours at our summer camp located on the modern campus of GEMS Wellington Academy Silicon Oasis, renowned for its top-tier facilities. Stay at The Myriad, offering twin en suite rooms, dining spaces, and a rooftop pool. Dubai, one of the safest cities in the world and an international hub, provides a perfect setting for an unforgettable learning adventure.

Spring Programmes

WE ARE EXCITED TO ANNOUNCE A NEW SET OF SPRING PROGRAMMES FOR 2025!

We will be at **Wellington College** from **March 30th to April 13th** ready to welcome groups from all around the world to this famous and iconic college in England.

Historic and traditional, a truly British experience. This famous and prestigious boarding school provides a world leading educational environment, a wealth of first-class facilities, all set on an inspirational campus very close to London.

We will be running a set of new programmes, discover them all below:

STANDARD STUDY TOURS PROGRAMME

The traditional mini-stay programme combining English lessons , excursions and activities!

UNIVERSITY PREPARATION PROGRAMME

This programme is ideal for students wanting to learn more about UK universities, how they operate, what they look for in applicants to their undergraduate courses. We provide insights into the application process and real-life campus tours.

OLYMPIAD PROGRAMME

Our Olympiad programme offers school groups a unique opportunity to compete against other schools from around the world in a competition filled with fun challenges based on the 4 'C's' identified as essential for 21st century learning and, ultimately, student success.

What are the 4 'C'S'?

- Communication
- Collaboration
- Critical Thinking
- Creativity

Students need these specific skills in order to enhance ways of thinking, learning, working and living in the world, helping them to prepare for their future success.

We are offering two programmes, at 7 or 12/14 night options to suit your students' needs.



**GLOBAL
ACHIEVERS
ACADEMY**
POWERED BY EC

TOMORROW'S LEADERS

All start with a remarkable journey

Discover new horizons and
prepare for a brighter future with
Global Achievers Academy.

 globalachieversacademy.com



Embassy Summer forms part of EC English Holdings Ltd.

embassysummer.com
ecenglish.com/en/young-learners